



NU-STYLE **SHUTTERS**

It's how we roll

CYCLONE WIND LOCK & EXTRUDED SLAT ROLLER SHUTTERS



COMMERCIAL GRADE SECURITY PROTECTION

HDF WIND LOCK SHUTTER SERIES

Since its inception our premium NS440 slat has consistently proven to be a high quality, robust and well accepted profile providing the perfect solid platform on which to develop the “HDF” profile.

The development and introduction of the High Density Foam (HDF) offers remarkable advantages such as increased strength and security for a variety of applications where there is a high wind or high risk.

The HDF is injected into the slat profile during the manufacturing and roll-forming process under controlled conditions

HDF WIND LOCK SHUTTER SERIES

The HDF Wind Lock Shutter Series incorporated the HDF slat profile restrained slat inserts and the heavy duty guides.



The increased density in the HDF profile allows the restrained slat inserts to be firmly screwed into the foam with two 25mm long screws rather than being stapled or punched as per the procedure of normal residential slats.

The restrained slat inserts are designed to lock with a central channel that would require considerable force to disengage.

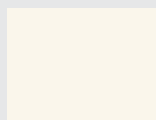
The restrained Guide has been specifically designed to cope with the added forces that the HDF slat will place on it. The wall thickness and overall engagement has been increased to allow for the restraining insert.



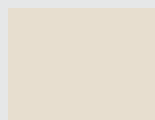
**HDF WIND
LOCK IS NOW
AVAILABLE IN:**



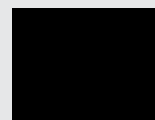
White



Almond



Sahara



Black



Deep
Ocean Blue



Woodland
Grey

CYCLONE TESTING AND RATING

The HDF Wind Lock Shutter underwent cyclone tests at the Cyclone Testing Station, James Cook University, Queensland and was approved for a Category 3 Cyclone Rating.

The test involves fitting the HDF Wind Lock Shutter to an air box facility which then simulates the enormous wind loads that can be encountered under tropical cyclone conditions. There are two appropriate Australian Standards that have been satisfied:

- Australian Standard AS/NZS 1170.2-2002 Structural Design Action Part 2. Wind Actions was used to determine the cyclonic wind loading for roller shutters fitted to a suburban house with an average roof height of 5m located in a sheltered Terrain Category 3 Region C cyclonic location. The design wind speed is calculated to be 47 meters per second (169.2 kl/h)
- The Australian Standard AS 4040.3-1992 Methods of Testing Sheet Roof and Wall Cladding, Method 3 Resistance to wind Pressures for cyclone regions was used to an ultimate load pressure of 2.50kPa, which is needed to fulfill the requirements.

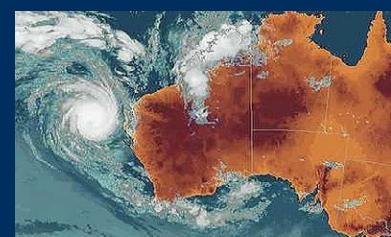
The HDF Wind Lock passed cyclic fatigue loads of 10,200 cycles at incremental increases to the final load supporting the final single cycle pressure of 2.5kpa for 1 minute. The shutter deflection only increase to a nominal distance of 82mm from the standard rest position during the tests.



Choose from 240v electric - remote or spring loaded backed up by the Nu Style 10 Year Warranty.

The HDF Wind Lock Shutters function the same as residential grade shutters and will also:

- Enhance security
- Increase privacy
- Reduce noise
- Shut out light
- Insulate your home, or business
- Reduce your energy bills



BUSHFIRE TESTING AND RATING



The Nu Style NSX extruded profile has been specially designed to meet a BAL (bush fire attack level) of 40 Helping to prevent embers and flames from bushfires entering your home through your windows. The test results are:

PERFORMANCE CRITERIA	TIME TO FAILURE	POSITION OF FAILURE
Formation of through gaps greater than 3 mm	NO FAILURE	-
Sustained flaming for 10 seconds on the non-fire side	NO FAILURE	-
Flaming on the fire exposed side at the end of 60 minutes test periods	NO FAILURE	-
Radiant heat flux 365mm from the non fire side exceeding 15kw/m2	NO FAILURE	-
Mean and max temperature rises greater than 140k and 180k	N/A	-
Radiant heat flux, 250mm from the specimen, greater than 3kW/m2 between 20 minutes and 60 minutes	NO FAILURE	-
Mean and maximum temperature of internal faces exceeding 250 degrees Celsius and 300 degrees Celsius respectively between 20 minutes and 60 minutes after commencement of test	N/A	-

CRIB CLASS B

PEAK HEAT FLUX

40 kW/m2

Performance observed in respect of clause 14.4 of AS1530.8.1-2007 criteria. Report number: FSZ 1444 / Job Number: SZ3303 / Date of issue: 5th of November 2010. For the purpose of building regulations in Australia, the test specimen achieved a Bushfire Attack Level (BAL) of B40. This report details methods of construction, the test conditions and the results obtained when the specific element of construction described herein was tested in accordance with AS 1530.8.1-2007

The NSX Shutter has been extensively tested by the CSIRO under severe bushfire simulated conditions and proved to be able to withstand a maximum radiant heat exposure of 40kW/m2 after 60 minutes. As no ignition or flaming was observed through the testing the NSX Shutter has received a bushfire Attack Level (BAL) of 40.

NSX EXTRUDED SLAT PROFILE

The NSX Extruded Slat Profile is ideal for residential or commercial use when added strength and security is required or bush fires may be of concern.

Manufactured to highest quality standards with state of the art equipment, the NSX profile is available in a 40mm curved profile boasting simplicity and style with robust build to withstand the toughest conditions.

The NSX Bal 40 Extruded Profile is available in several colours as a standard with a powder coating quality that is long lasting and fade resistant under the most demanding conditions but can also be powder coated to any custom colours of your choice!

For extra strength and security the NSX extruded slat profile is also available with the upgraded wind lock clips and tracking system from the HDF model giving your

Features & Benefits

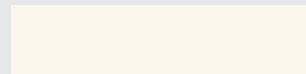
- Bush Fire Attack Level (BAL) 40
- Premium strength and security
- Minimal flex
- Wide span options available
- Can be powder coated custom colours
- Normal thickness 9mm
- Cover size 40mm
- Estimated weight plm 286 kgm
- Grade of Alloy 6060 - T5
- Slat wall thickness of 0.8mm

shutters increased strength from the wind and break ins. Each wind lock clip is fixed into the extruded slats with 2 screws, creating a superior defense against break ins.

Standard Colours



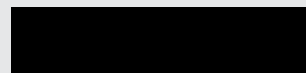
White



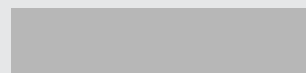
Almond



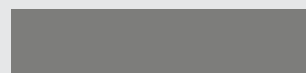
Sahara



Black



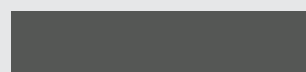
Anodised



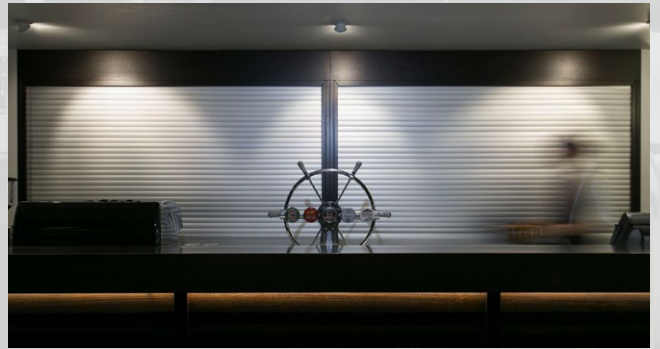
Mill Finish



Navy



Woodland Grey



CHOOSE FROM ELECTRIC OR SPRING LOADED OPERATION WITH KEY LOCK AND KEYFOBS AVAILABLE. PERFECT FOR SECURITY AND SHOP FRONTS.



*Conditions Apply

EUROPEAN DESIGNED



AUSTRALIAN MADE

Ask us for RAC member's Discount



NU-STYLE
SHUTTERS
It's how we roll

1300 798 776

179 Beringarra Avenue,
MALAGA WA 6090

info@nustyleshutters.com.au

www.nustyleshutters.com.au